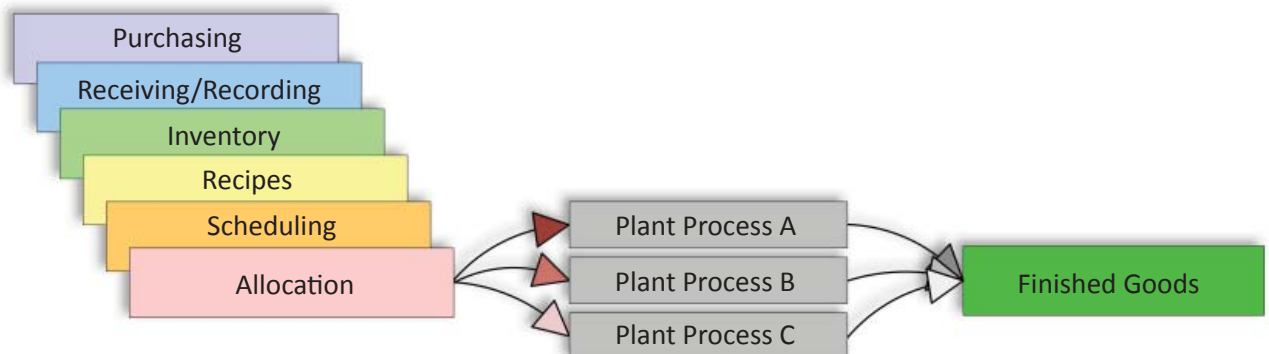


Computerway's Process Tracking (PT) is a highly configurable computerized system designed for real-time tracking of products used in food manufacturing operations. PT is distinctive from "other" office-based systems in that it provides a method to mimic virtually any food production process with various combinations of in-plant and office-based computer equipment.

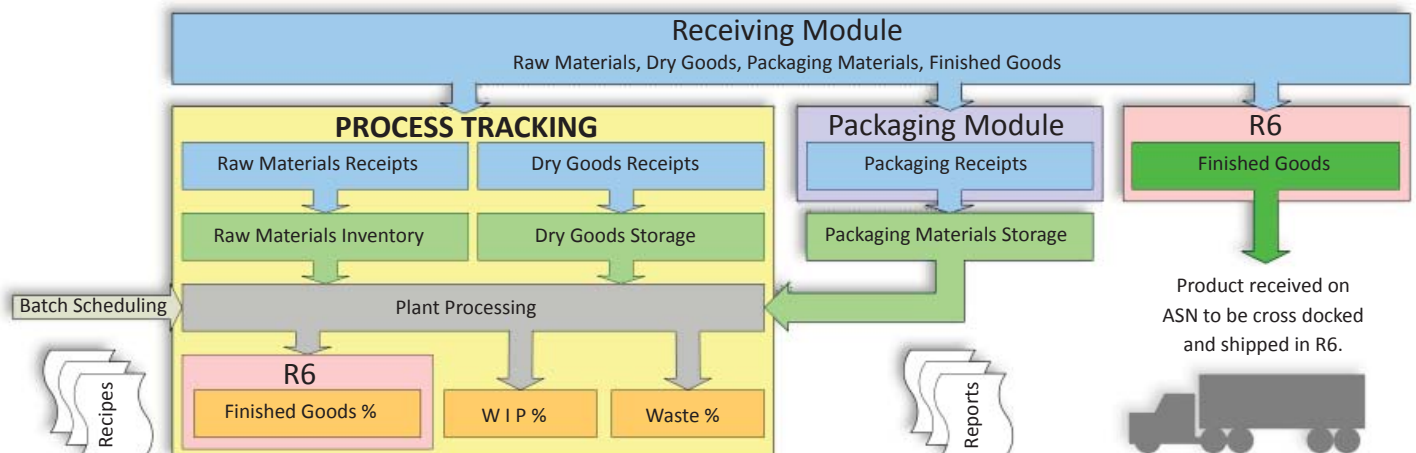
## Features and Benefits:

- ◆ Provides control over receiving of inbound material
- ◆ Simple integration with ERP and Accounting systems
- ◆ Integrated batch management and lot tracking capability
- ◆ Improved plant efficiency with timely & accurate information
- ◆ Reduced clerical and supervisory labor
- ◆ Simplifies data capture and tracking for "safe" food
- ◆ Extensive reporting and sharing with other CFS systems
- ◆ Receipt of purchasing information from accounting system
- ◆ Recording of all inbound receipts (RM, DG, PM)
- ◆ Inventory management for Raw Materials and Dry Goods
- ◆ Data collection at critical points throughout WIP operations
- ◆ Recipe maintenance and batch scheduling capabilities
- ◆ Yield control and reporting
- ◆ Web-based technology

## Process Tracking Enables Traceability from the Receipt of Materials Throughout WIP Operations:



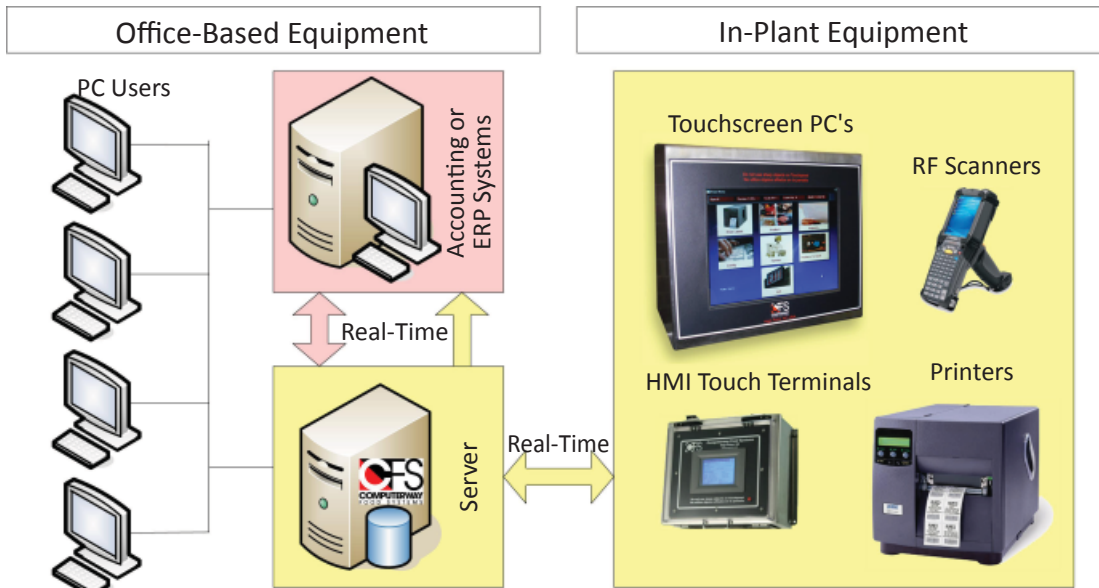
## Process Tracking is Highly Configurable:



**PROCESS TRACKING — HARDWARE SPECIFICATIONS AND FEATURES:**

Process Tracking utilizes RF scanners, PC's, and cost-effective Human-to-Machine Interface (HMI) devices, located where applicable on the shop floor and in critical product movement areas. The software applications and databases at the core of the Process Tracking system operate on a system server located in an appropriate office at the factory. Strategically placed touch-panel displays and portable RF terminals automatically connect to this server and are used to record the movement, consumption, and production of items anywhere in the plant process.

**Maximize the Value of your Enterprise Resource Planning (ERP) or Accounting System with Real-Time Data:**



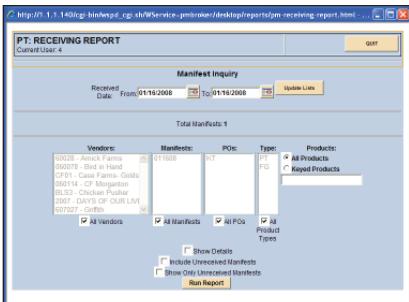
**B-15 Washdown Touchscreen PC's:**

- ◆ Windows PC with full washdown protection, RF capability
- ◆ Pedestal, machine, or wall mount
- ◆ Mobile or stationary
- ◆ 15" TFT Color LCD / 1024 x 768 pixels / 60° viewing angle
- ◆ 1.5 GHz Celeron M FSB 400 processor
- ◆ 512MB system memory / 40 GB hard drive
- ◆ 1 full-height, half-length PCI slot / 3 DB-9 serial ports
- ◆ 2 RJ45 LAN ports / 4 USB 2.0/1.1 ports
- ◆ Anti-glare hard coating (3H) surface treatment
- ◆ Operating temperature: 0° - 50° C
- ◆ Touchscreen is rated durable to 50 million touches

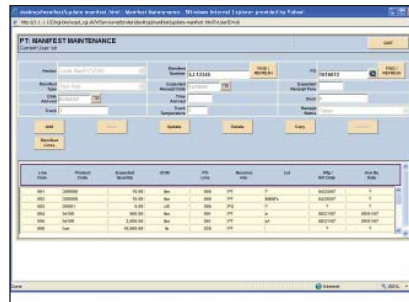
**P-6 Human Machine Interface (HMI) Touch Terminals:**

- ◆ NEMA 4 wash-down-proof enclosure
- ◆ Clear Lexan face panel for maximum protection and utility
- ◆ Win CE .NET OS with standard browser & networking capabilities
- ◆ Flash memory / Small interface
- ◆ Enclosure: 15" H x 13" W x 8.5" D / Plastic or Stainless Steel
- ◆ Display: 6.5" diagonal Color LCD / Touch Panel
- ◆ View, record, or modify "Blox" or lot information
- ◆ View, record, or modify machine operation or status
- ◆ View, record, or modify line or machine stoppage
- ◆ View system alarms or messages in the plant environment
- ◆ Collect quality control test results

*Receiving Report*



*Manifest Entry*



*Batch Scheduling*

